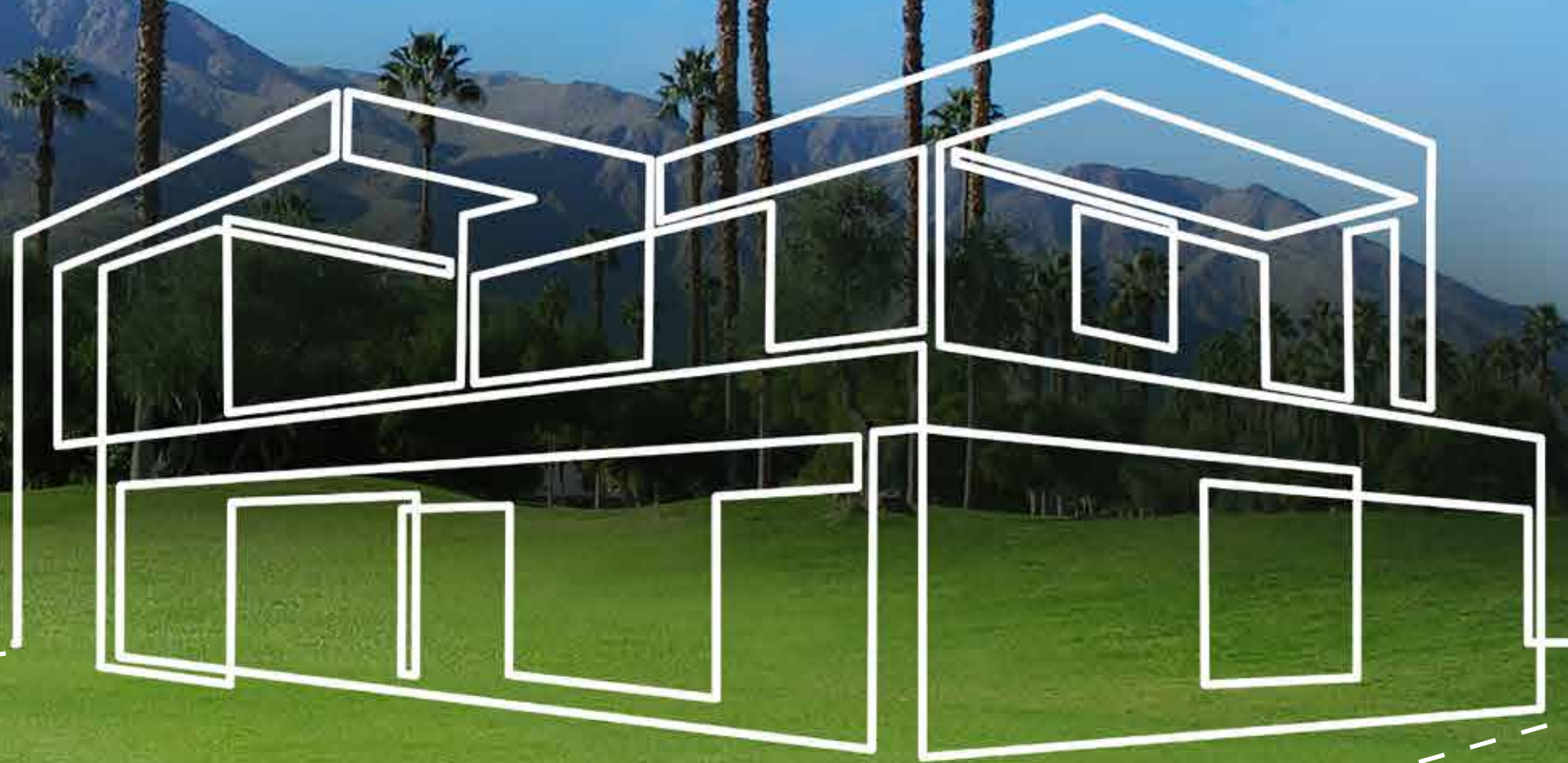


Plot investments  
that are more than  
memorable.



Limited-Edition Plots at Alibaug  
**mahindra Meridian**  
Craft a life where time is yours

Image for representational purposes only.



# Experience Konkan's finest piece of paradise – Alibaug

---

Quickly accessible from South Mumbai, Alibaug is a little slice of heaven untouched by the hustle and bustle of the city. A popular tourist destination, it is now becoming the preferred holiday home hotspot for the who's who of the city.

Alibaug's proximity to Mumbai, by virtue of efficient infrastructure, makes weekend getaways alluringly easy.



# Begin your journey

---



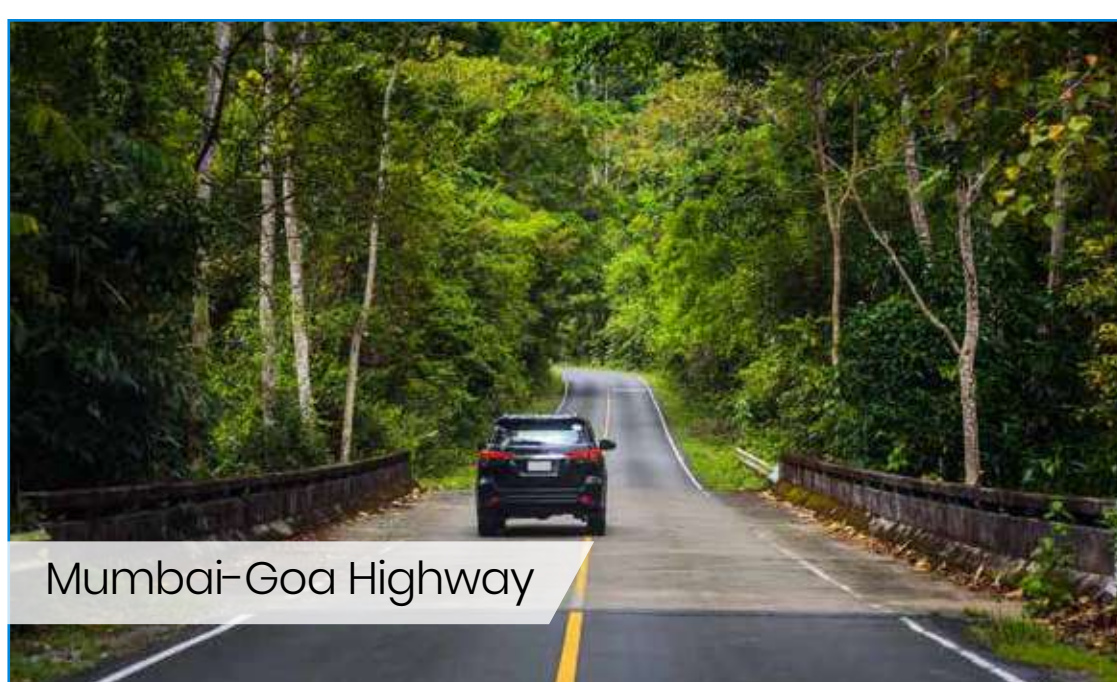
The RoRo from Bhaucha Dhakka Ferry Wharf (Mazgaon) to Mandwa Jetty is a convenient one hour travel.



The speedboat from the Gateway of India will take you to Mandwa Jetty in 20 minutes.



A newly introduced Water Taxi service carries you from Mazgaon to Mandwa within 40 minutes.



Reach Alibaug from Mumbai via the scenic Mumbai-Goa Highway.

All images above are for representational purposes only.

## Proposed infrastructure



The proposed 12 lane 126-km-long Virar-Alibaug multi-modal corridor\* aims to provide a vehicular speed of 120 km/hour, shortening the distance between Alibaug and Panvel to approximately 50 km (less than an hour's drive).



Mumbai Trans Harbour Link^

Source: \*<https://mmrda.maharashtra.gov.in/multimodal-corridor-from-virar-to-alibaug> | ^<https://mmrda.maharashtra.gov.in/mthl>





Key distances	Nearest emergency services
<ul style="list-style-type: none"> <li>▪ Nagaon Beach – 1.5 km</li> <li>▪ Akshi/Raiwadi – 5.5 km</li> <li>▪ Revdanda – 9.4 km</li> <li>▪ Alibaug – 10.8 km</li> <li>▪ Colaba – 11 km</li> <li>▪ Varsoli – 12.5 km</li> <li>▪ Kashid to Nagaon – 24 km</li> <li>▪ Murud beach to Nagaon – 40 km</li> <li>▪ Mumbai-Pune Expressway – 63 km</li> </ul>	<ul style="list-style-type: none"> <li>▪ Pharmacy-Vinayak Medical, Nagaon – 3km</li> <li>▪ Anjali Fracture Clinic &amp; Hospital – 9 km</li> <li>▪ Chaitanya Hospital – 10 km</li> <li>▪ Laxmi ICU and Nursing Center – 10 km</li> <li>▪ Sushrut Hospital – 11 km</li> <li>▪ Alibaug Civil Hospital – 11 km</li> </ul>

\*Shortest distance as per Google maps, as of November 2022.



# Own a home beside your favourite stars

Alibaug as a location is gaining prominence by attracting many distinguished and illustrious people, including iconic personalities. Brimming with investment opportunities, Alibaug has secured a significant place in the market and in the mind of its investors, proving to be a profitable venture. With its growing recognition, Alibaug is speedily becoming a reservoir of value and growth for many.

**Virat Kohli and Anushka Sharma buy farmhouse in Alibaug worth Rs. 19.24 cr | Details here**

**Alibaug: A haven in the new normal as people look for a slice of paradise**

**Maharashtra: After Tendulkar and Kohli, Rohit sharma buys land in Alibaug**

**For Mumbaikars, work from home triggers an escape to beach town Alibaug**

**Deepika Padukone, Ranveer Singh begin work on their plush sea-facing vacation home in Alibaug, see pic**

**Alibaug is the plush WFH destination for well-heeled Mumbaikars in this pandemic**

Knowledge Centre >> Articles >> Mumbai Real Estate Articles

Locality Profile

## Alibaug: A preferred second home destination in Mumbai

Subhadra Bhaduria  
Editor  
99acres.com

**Juhi Chawla buys property in Alibaug for Rs 1.89 crore**

**Rhea Kapoor is working from home in Alibaug, says she can't wait to make movies again**

Source:

<https://www.msn.com/en-in/news/other/maharashtra-after-tendulkar-and-kohli-rohit-sharma-buys-land-in-alibaug/ar-AARQ14o>  
[https://www.business-standard.com/article/current-affairs/for-mumbaikars-work-from-home-triggers-an-escape-to-beach-town-alibaug-120102700068\\_1.html](https://www.business-standard.com/article/current-affairs/for-mumbaikars-work-from-home-triggers-an-escape-to-beach-town-alibaug-120102700068_1.html)  
[https://indianexpress.com/article/entertainment/bollywood/deepika-padukone-ranveer-si\[...\]r-plush-sea-facing-vacation-home-in-alibaug-see-pic-7543142/](https://indianexpress.com/article/entertainment/bollywood/deepika-padukone-ranveer-si[...]r-plush-sea-facing-vacation-home-in-alibaug-see-pic-7543142/)  
<https://www.99acres.com/articles/alibaug-preferred-second-home-destination-in-mumbai.html>  
[https://www.indiatoday.in/movies/celebrities/story/rhea-kapoor-is-working-from-home-if\[...\]g-says-she-cant-wait-to-make-movies-again-1782691-2021-03-23](https://www.indiatoday.in/movies/celebrities/story/rhea-kapoor-is-working-from-home-if[...]g-says-she-cant-wait-to-make-movies-again-1782691-2021-03-23)  
<https://www.indiatvnews.com/entertainment/celebrities/virat-kohli-anushka-sharma-buy-farmhouse-alibaug-worth-rs-19-cr-details-here-2022-09-02-804858>  
[https://economictimes.indiatimes.com/magazines/panache/alibaug-a-haven-in-the-new-normal-as\[...\]look-for-a-slice-of-paradise/articleshow/87840225.cms](https://economictimes.indiatimes.com/magazines/panache/alibaug-a-haven-in-the-new-normal-as[...]look-for-a-slice-of-paradise/articleshow/87840225.cms)



# A perfect plot

---

Craft your way to a fulfilling life.

Take the first step towards making your dream home into a success story.

**Introducing Limited-Edition plots at Mahindra Meridian, Alibaug** where you can craft a cocoon of comfort as per your taste.

With these benefit-rich plots, you can finally realise the aspirational lifestyle your family always wanted. Enable a nurturing home where you can lead a healthy & blissful life in the warm embrace of nature.





# Pick a plot, get a lot

---

- **24 Limited-Edition**  
ready-to-construct plots
- **Just 1.5 km**  
from Nagaon Beach
- RERA approved and  
**clear documentation**
- Plots ranging from  
**5400–7800 sq. ft.**
- Alibaug's only plotted development having  
**30+ amenities** and a **clubhouse\***
- **24x7 CCTV**  
surveillance
- **Avenue plantation** along common  
roads within the project
- **Clear demarcated boundaries**  
for each plot
- **Well-laid tar top**  
internal roads

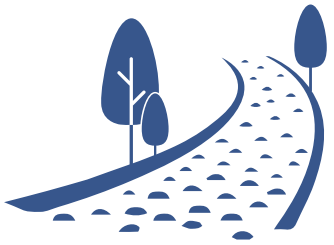


# Escape to your retreat

Treasure the luxury of time with carefully crafted amenities

---

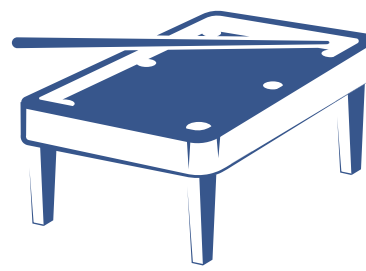
## Relax at



Reflexology  
Path



Play Park

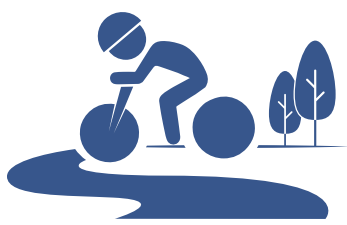


Rec Club



Reading  
Machan

## Destress at



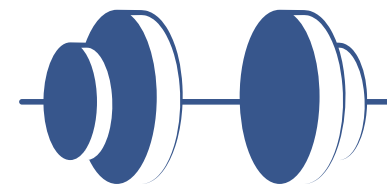
Pedal Zone



Al Fresco  
Fitness Trail

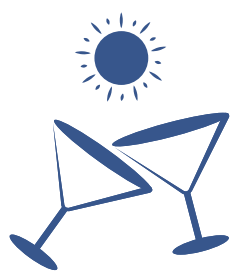


Yoga  
Gazebo



Gym

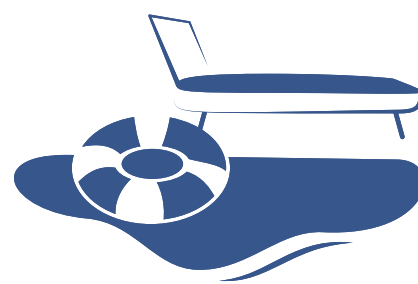
## Celebrate at



Sunset  
Soiree



Celebration  
Lawn



Watersports  
Pool



Watersports Pool

Artist's Impression, for representational purposes only.

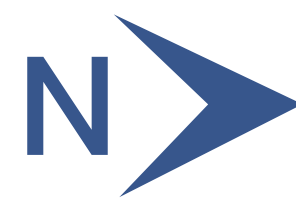


Reading Machan

Artist's Impression, for representational purposes only.



# Master layout



Map not to scale.

Plot No.	Size sq.m. (sq.ft.)
07	552.52 sq.m. (5,947.33 sq.ft.)
22	714.09 sq.m. (7,686.46 sq.ft.)
23	710.09 sq.m. (7643.34 sq.ft.)
24	612.10 sq.m. (6588.58 sq.ft.)
25	521.57 sq.m. (5614.13 sq.ft.)
26	600.46 sq.m. (6463.29 sq.ft.)
27	730.57 sq.m. (7863.78 sq.ft.)
28	684.54 sq.m. (7368.32 sq.ft.)
29	574.14 sq.m. (6179.99 sq.ft.)
30	728.44 sq.m. (7840.86 sq.ft.)
31	528.31 sq.m. (5686.68 sq.ft.)
32	551.27 sq.m. (5933.82 sq.ft.)
33	519.17 sq.m. (5588.29 sq.ft.)

Plot No.	Size sq.m. (sq.ft.)
34	544.20 sq.m. (5857.71 sq.ft.)
35	577.38 sq.m. (6214.86 sq.ft.)
36	545.41 sq.m. (5870.74 sq.ft.)
37	678.17 sq.m. (7299.75 sq.ft.)
38	558.38 sq.m. (6010.35 sq.ft.)
39	528.27 sq.m. (5686.25 sq.ft.)
40	523.83 sq.m. (5638.45 sq.ft.)
41	523.32 sq.m. (5632.96 sq.ft.)
42	513.98 sq.m. (5532.43 sq.ft.)
43	525.91 sq.m. (5660.84 sq.ft.)
44	504.08 sq.m. (5425.87 sq.ft.)
45	531.50 sq.m. (5721.01 sq.ft.)
46	546.38 sq.m. (5881.18 sq.ft.)



# One plot, many reasons

---



## Maximum flexibility

Craft a villa as per your taste and convenience.

## Ease of purchase

Time-saving buying procedure as you can immediately own the land once all transactions are complete.



## Great investment

Land is reasonably priced. It is less expensive, and investors stand to gain financially in the long run.







## Quicker possession

Plan construction of your home as per your own schedule.

## Community benefits

Enjoy all the benefits of being a part of Mahindra Meridian, in a home built by you.

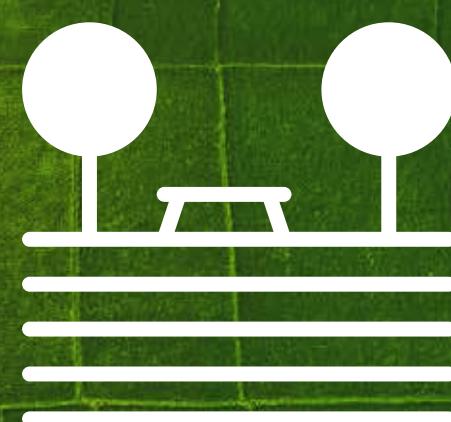


## Customization

Craft a home as per your taste and express yourself the way you want, in your own aesthetic.

## Land ownership

As a tangible investment and an asset that keeps increasing in value over time, it also provides passive income, security and returns.





# Our luxury portfolio

## mahindra Luminare



## mahindra Windchimes



## mahindra Aqualily



## mahindra L'Artista



All project images shot on location.

- Wraparound balcony
- Private lift lobby
- All corner homes
- Located on the prestigious Golf Course Extension Road, Sec. 59 Gurugram
- Premium **3 & 4** BHK apartments
- Over **80%** open spaces
- Dedicated **55 acres** gated community within the Mahindra World City ecosystem
- **3 & 4** BHK duplex and premium villas
- Only **16** families per acre
- Art-inspired design
- Only **2** apartments per floor
- Located in the prestigious Sopan Baug area in Pune

## Mahindra Lifespace Developers Ltd.

Established in 1994, Mahindra Lifespace Developers Ltd. brings the Mahindra Group's philosophy of 'Rise' to India's real estate and infrastructure industry through thriving residential communities and enabling business ecosystems.



### Development Footprint

**32.14 million sq.ft.** of completed, ongoing and forthcoming residential projects across **7 Indian cities**; and over **5000 acres** of ongoing and forthcoming projects across four locations.



### Development Portfolio

- Premium and luxury residential projects
- Value homes under the 'Mahindra Happinest®' brand
- Integrated cities and industrial clusters under the 'Mahindra World City' and 'Origins by Mahindra' brands



### Accolades

- India's first real estate company to launch a Net Zero Energy Residential project
- First real estate company in India to have committed to the global Science Based Targets initiative (SBTi)
- With 100% Green portfolio since 2014, the company is working towards carbon neutrality by **2040**
- Actively supports research on green buildings tailored to climatic conditions in India
- Recipient of over **80 awards** for its projects and ESG initiatives





Image for representational purposes only.

Limited-Edition Plots at Alibaug  
**mahindra Meridian**  
Craft a life where time is yours

**Experience Center:**  
Mahindra Meridian, Kawle Paroda Hatale Village,  
Alibaug, Maharashtra 402 204.

**Registered Office:**  
Mahindra Towers, 5th floor, Dr. G. M. Bhosale Marg,  
Worli, Mumbai – 400018.



The project "Mahindra Meridian Plots" is registered under MahaRERA no. P52000048049 and available on <https://maharera.mahaonline.gov.in>, valid up to 30.03.2025.

Disclaimer: This Project is being developed by Mahindra Lifespace Developers Limited ("MLDL") in phased manner. This document is an artistic conceptualization for illustration and representation purpose only and is not a legal offering. The information contained in this communication is only indicative of the proposed development and is subject to change with requisite approvals. MLDL reserves the right to make any changes or alterations. T&C apply.